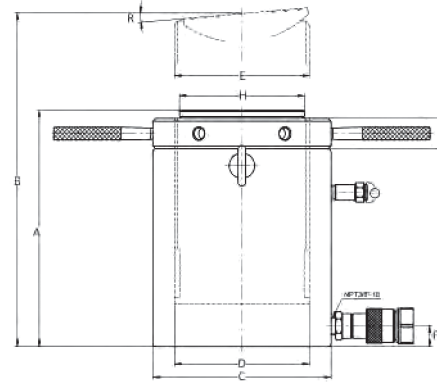


## Single-Acting Low Profile Lock-nut Hydraulic Cylinder



Capacity: 60-520 ton  
Stroke: 45-50 mm  
Max. Pressure: 700 bar

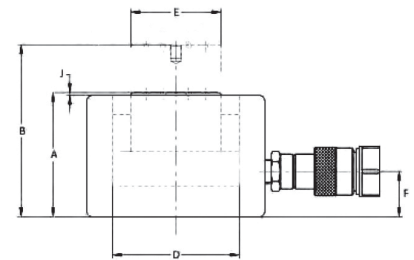
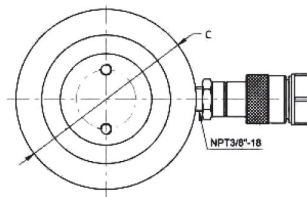


Cylinder Capacity ton	Stroke (mm)	Model Number	Oil Capacity	Collapsed Height	Extended Height	Outside Dia.	Cylinder Bore Dia.	Plunger Dia. (Thread)	Base to Advance port	Saddle Dia.	Saddle Protrusion from Plgr.	Saddle Max. Tilt Angle	Plunger Dia.	Weight (Kg)
				A (mm)	B (mm)	C (mm)	D (mm)	E (mm)	F (mm)	H (mm)	J (mm)	R (mm)	S (mm)	
60 (606)	50	SL LH 60-50	432	125	175	140	106	Tr104x4	19	96	6	5	28	15
100 (1027)	50	SL LH 100-50	734	137	187	180	137	Tr136x6	21	126	8	5	31	27
160 (1619)	45	SL LH 160-45	1040	148	193	224	172	Tr171x6	27	160	9	5	40	45.5
200 (1999)	45	SL LH 200-45	1285	155	200	245	190.7	Tr190x6	30	180	10	5	43	57
260 (2567)	45	SL LH 250-45	1650	159	204	275	216	Tr215x6	32	200	11	5	44	74
400 (3916)	45	SL LH 400-45	2517	178	223	350	270	Tr266x6	41	251	11	4	55	134
520 (5114)	45	SL LH 500-45	3287	192	237	400	305	Tr304x6	48	289	10	3	62	188

## Single-Acting Low Profile Hydraulic Cylinder



Capacity: 10-150 ton  
Stroke: 11-80 mm  
Max. Pressure: 700 bar



Cylinder Capacity ton (kN)	Stroke (mm)	Model Number	Oil Capacity (cm <sup>3</sup> )	Collapsed Height	Extend Height	Outside Dia.	Cylinder Bore Dia.	Plunger Dia. (Thread)	Base to Advance port	Saddle Protrusion from Plgr.	Saddle Max. Tilt Angle	Plunger to Mounting Hole	Weight (Kg)
				A (mm)	B (mm)	C (mm)	D (mm)	E (mm)	F (mm)	J (mm)	M (mm)	N (*)	
10 (101)	38	SLH 10-38	60	88	126	78	45	35	23	2	-	-	4
20 (201)	45	SLH 20-45	140	97	142	96	63	50	23	2	-	-	6.9
30 (295)	64	SLH 30-64	290	117	181	109	76	60	23	2	-	-	9.8
50 (435)	60	SLH 50-60	471	120	180	233	200	80	24	2	-	-	13.3
75 (718)	50	SLH 75-50	584	116	166	157	122	100	21	2	-	-	19
100 (887)	57	SLH 100-57	877	141	198	176	140	112	31	2	-	-	24.5
150 (1386)	51	SLH 150-51	1184	141	192	215	172	145	28	2	-	-	42
150 (1386)	80	SLH 150-80	1860	170	250	215	172	145	28	2	-	-	50